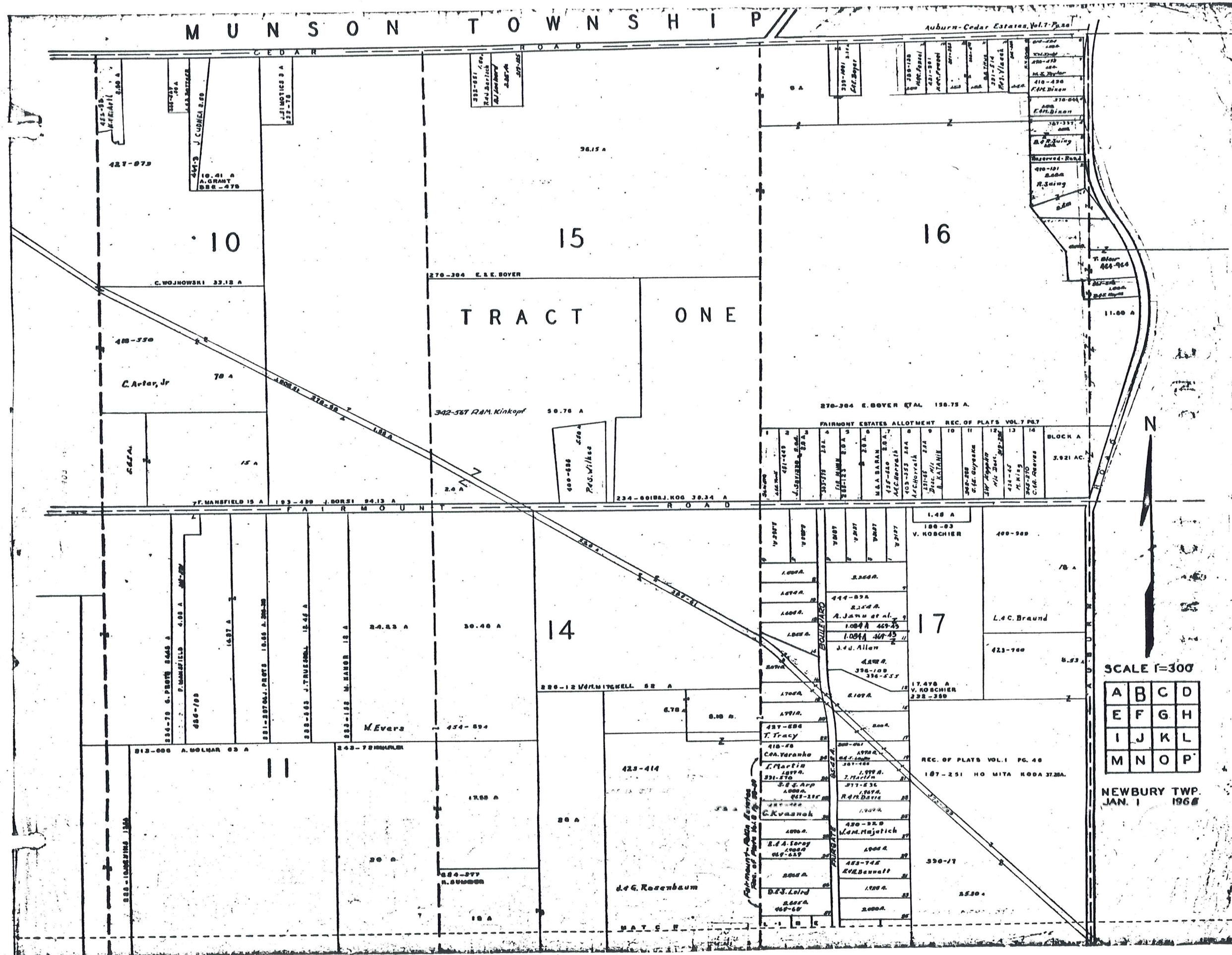


MUNSON TOWNSHIP

Auburn-Cedar Estates, Vol. 7, Page

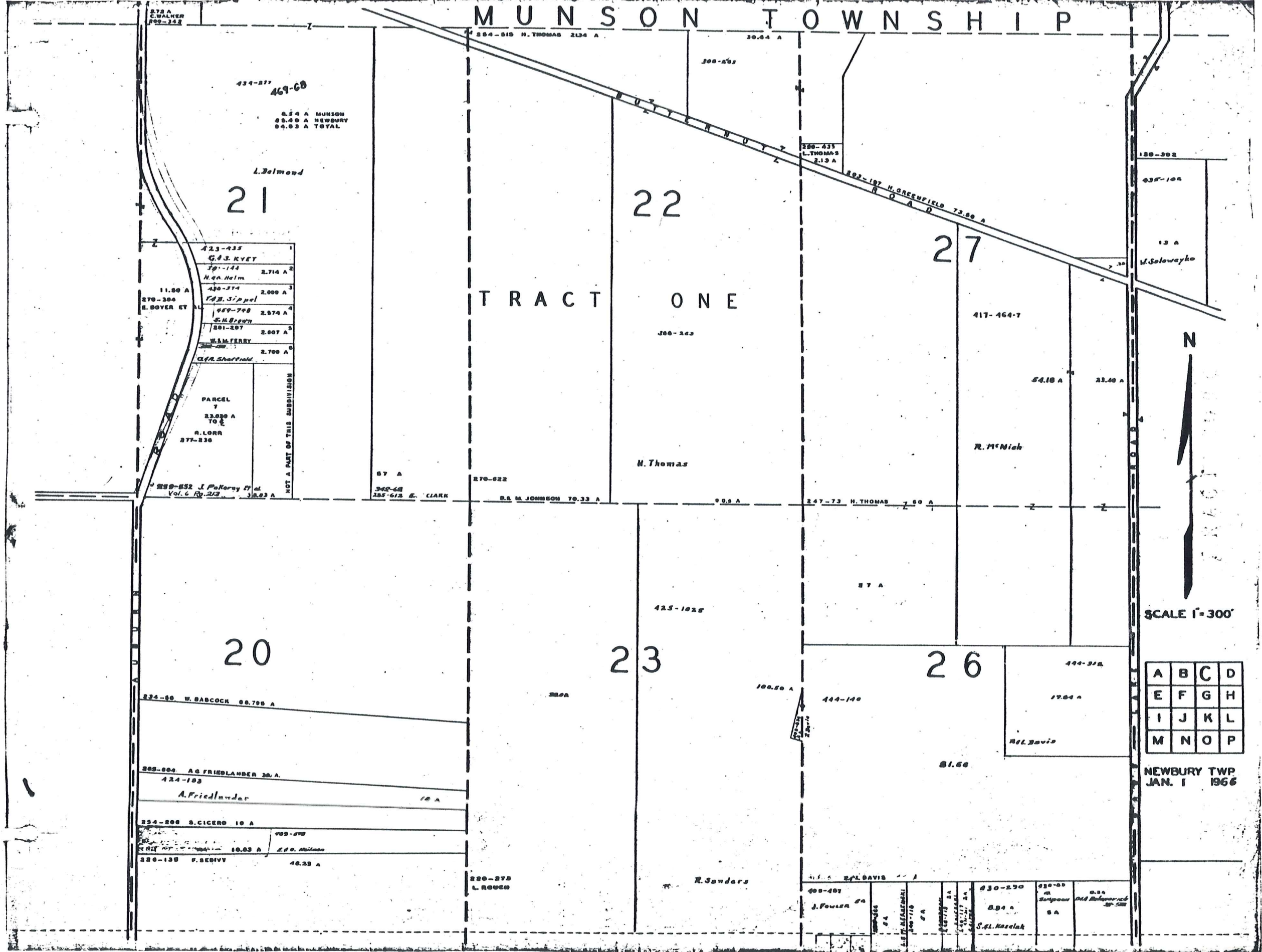


SCALE 1"=300'

A	B	C	D
E	F	G	H
I	J	K	L
M	N	O	P

NEWBURY TWP. JAN. 1 1968

MUNSON TOWNSHIP



434-277
469-68
0.54 A MUNSON
25.49 A NEWBURY
26.03 A TOTAL

L. Belmont
21

423-415	G.S. KYET	2.714 A
39-144	H.A. Helm	2.714 A
430-374	F.B. Sippel	2.000 A
989-700	E.H. Brown	2.574 A
101-207	W.M. FERRY	2.007 A
101-207	C.R. Sheffield	2.700 A

PARCEL 7
23.030 A
TO
R. LORR
277-236

289-652 J. PaKorny et al.
Vol. 6 Pg. 212 30.83 A

20

234-80 W. BABCOCK 80.795 A

205-804 A.G. FRIEDLANDER 20 A
424-193
A. Friedlander

234-808 S. CICERO 10 A

212-107 10.03 A
E.D. Hillman

226-138 P. BEHIVY 46.23 A

TRACT ONE

22

H. Thomas

23

220-273
L. ROUSE

27

417-464-7

R. McNish

26

444-140

R.L. Davis

415-415	E.L. DAVIS	1.00 A
408-407	J. FOWLER	0.4 A
408-408	J. FOWLER	0.4 A
408-409	J. FOWLER	0.4 A
408-410	J. FOWLER	0.4 A
408-411	J. FOWLER	0.4 A
408-412	J. FOWLER	0.4 A
408-413	J. FOWLER	0.4 A
408-414	J. FOWLER	0.4 A
408-415	J. FOWLER	0.4 A
408-416	J. FOWLER	0.4 A
408-417	J. FOWLER	0.4 A
408-418	J. FOWLER	0.4 A
408-419	J. FOWLER	0.4 A
408-420	J. FOWLER	0.4 A
408-421	J. FOWLER	0.4 A
408-422	J. FOWLER	0.4 A
408-423	J. FOWLER	0.4 A
408-424	J. FOWLER	0.4 A
408-425	J. FOWLER	0.4 A
408-426	J. FOWLER	0.4 A
408-427	J. FOWLER	0.4 A
408-428	J. FOWLER	0.4 A
408-429	J. FOWLER	0.4 A
408-430	J. FOWLER	0.4 A
408-431	J. FOWLER	0.4 A
408-432	J. FOWLER	0.4 A
408-433	J. FOWLER	0.4 A
408-434	J. FOWLER	0.4 A
408-435	J. FOWLER	0.4 A
408-436	J. FOWLER	0.4 A
408-437	J. FOWLER	0.4 A
408-438	J. FOWLER	0.4 A
408-439	J. FOWLER	0.4 A
408-440	J. FOWLER	0.4 A
408-441	J. FOWLER	0.4 A
408-442	J. FOWLER	0.4 A
408-443	J. FOWLER	0.4 A
408-444	J. FOWLER	0.4 A
408-445	J. FOWLER	0.4 A
408-446	J. FOWLER	0.4 A
408-447	J. FOWLER	0.4 A
408-448	J. FOWLER	0.4 A
408-449	J. FOWLER	0.4 A
408-450	J. FOWLER	0.4 A
408-451	J. FOWLER	0.4 A
408-452	J. FOWLER	0.4 A
408-453	J. FOWLER	0.4 A
408-454	J. FOWLER	0.4 A
408-455	J. FOWLER	0.4 A
408-456	J. FOWLER	0.4 A
408-457	J. FOWLER	0.4 A
408-458	J. FOWLER	0.4 A
408-459	J. FOWLER	0.4 A
408-460	J. FOWLER	0.4 A
408-461	J. FOWLER	0.4 A
408-462	J. FOWLER	0.4 A
408-463	J. FOWLER	0.4 A
408-464	J. FOWLER	0.4 A
408-465	J. FOWLER	0.4 A
408-466	J. FOWLER	0.4 A
408-467	J. FOWLER	0.4 A
408-468	J. FOWLER	0.4 A
408-469	J. FOWLER	0.4 A
408-470	J. FOWLER	0.4 A
408-471	J. FOWLER	0.4 A
408-472	J. FOWLER	0.4 A
408-473	J. FOWLER	0.4 A
408-474	J. FOWLER	0.4 A
408-475	J. FOWLER	0.4 A
408-476	J. FOWLER	0.4 A
408-477	J. FOWLER	0.4 A
408-478	J. FOWLER	0.4 A
408-479	J. FOWLER	0.4 A
408-480	J. FOWLER	0.4 A
408-481	J. FOWLER	0.4 A
408-482	J. FOWLER	0.4 A
408-483	J. FOWLER	0.4 A
408-484	J. FOWLER	0.4 A
408-485	J. FOWLER	0.4 A
408-486	J. FOWLER	0.4 A
408-487	J. FOWLER	0.4 A
408-488	J. FOWLER	0.4 A
408-489	J. FOWLER	0.4 A
408-490	J. FOWLER	0.4 A
408-491	J. FOWLER	0.4 A
408-492	J. FOWLER	0.4 A
408-493	J. FOWLER	0.4 A
408-494	J. FOWLER	0.4 A
408-495	J. FOWLER	0.4 A
408-496	J. FOWLER	0.4 A
408-497	J. FOWLER	0.4 A
408-498	J. FOWLER	0.4 A
408-499	J. FOWLER	0.4 A
408-500	J. FOWLER	0.4 A

430-250	S.H. KAZELAK	0.4 A
430-251	S.H. KAZELAK	0.4 A
430-252	S.H. KAZELAK	0.4 A
430-253	S.H. KAZELAK	0.4 A
430-254	S.H. KAZELAK	0.4 A
430-255	S.H. KAZELAK	0.4 A
430-256	S.H. KAZELAK	0.4 A
430-257	S.H. KAZELAK	0.4 A
430-258	S.H. KAZELAK	0.4 A
430-259	S.H. KAZELAK	0.4 A
430-260	S.H. KAZELAK	0.4 A
430-261	S.H. KAZELAK	0.4 A
430-262	S.H. KAZELAK	0.4 A
430-263	S.H. KAZELAK	0.4 A
430-264	S.H. KAZELAK	0.4 A
430-265	S.H. KAZELAK	0.4 A
430-266	S.H. KAZELAK	0.4 A
430-267	S.H. KAZELAK	0.4 A
430-268	S.H. KAZELAK	0.4 A
430-269	S.H. KAZELAK	0.4 A
430-270	S.H. KAZELAK	0.4 A
430-271	S.H. KAZELAK	0.4 A
430-272	S.H. KAZELAK	0.4 A
430-273	S.H. KAZELAK	0.4 A
430-274	S.H. KAZELAK	0.4 A
430-275	S.H. KAZELAK	0.4 A
430-276	S.H. KAZELAK	0.4 A
430-277	S.H. KAZELAK	0.4 A
430-278	S.H. KAZELAK	0.4 A
430-279	S.H. KAZELAK	0.4 A
430-280	S.H. KAZELAK	0.4 A



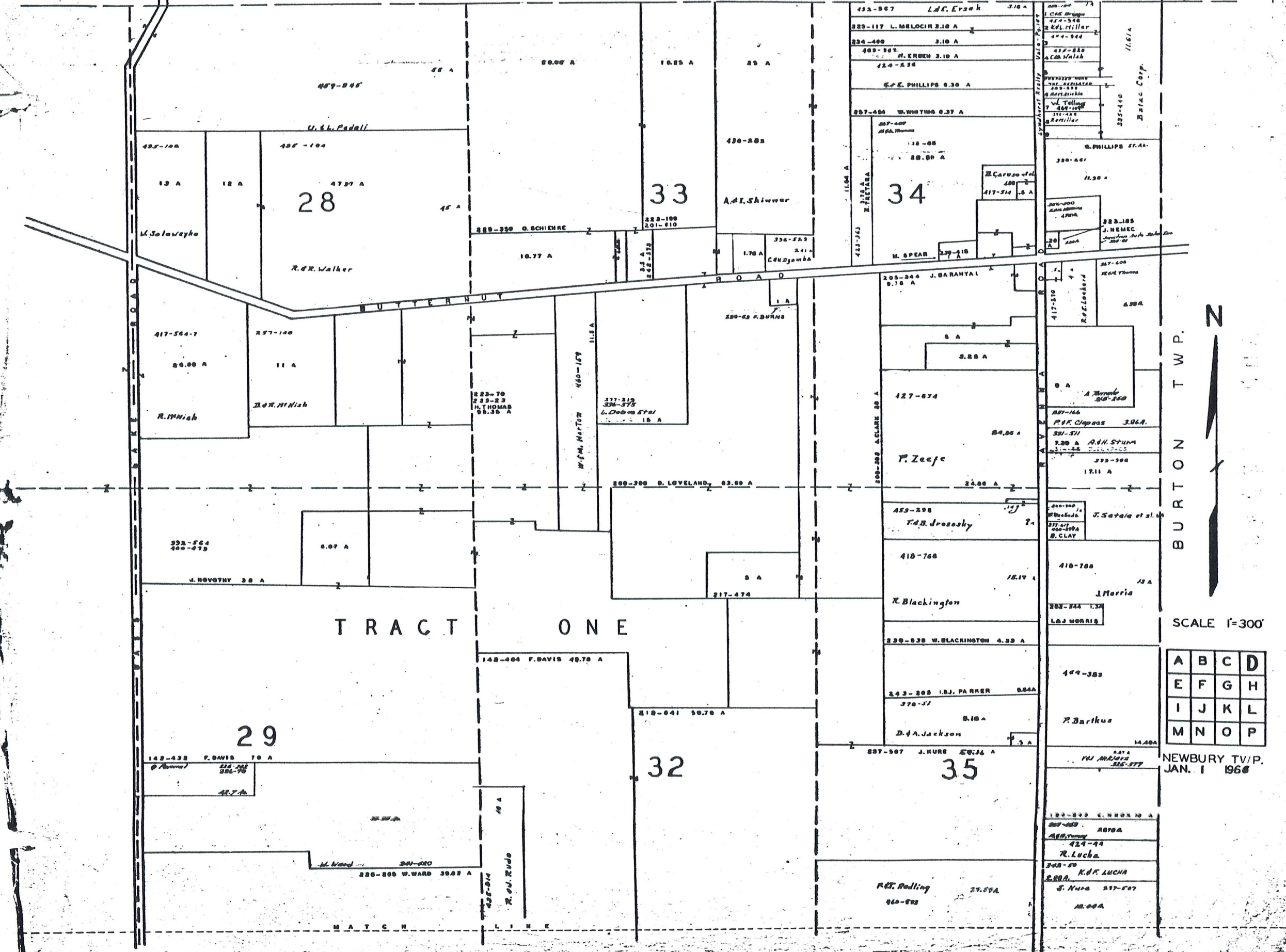
SCALE 1"=300'

A	B	C	D
E	F	G	H
I	J	K	L
M	N	O	P

NEWBURY TWP
JAN. 1 1966

MUNSON TOWNSHIP

CLARIDON TWP.

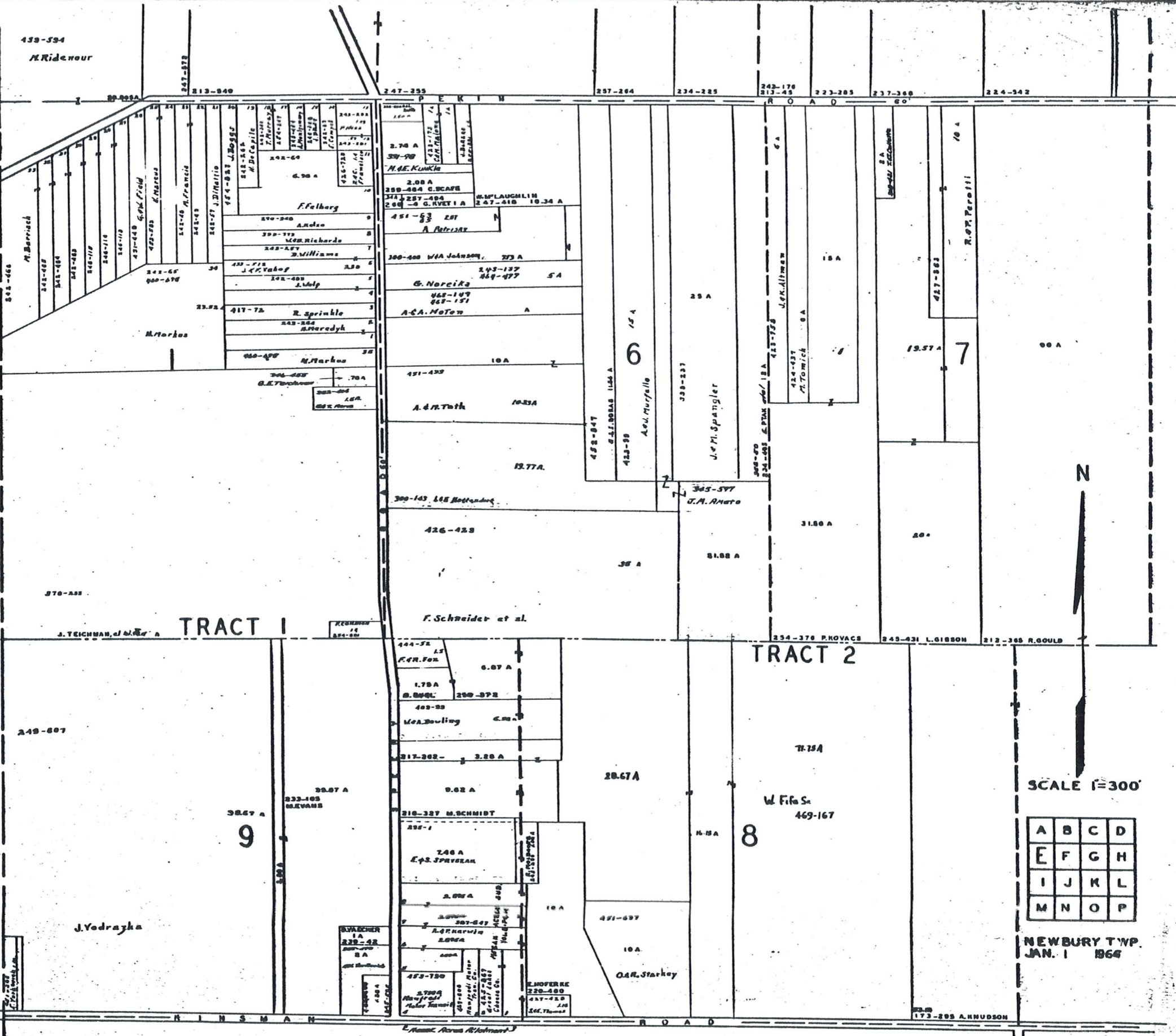


SCALE 1"=300'

A	B	C	D
E	F	G	H
I	J	K	L
M	N	O	P

NEWBURY TWP. JAN. 1 1966

R U S S E L L T O W N S H I P



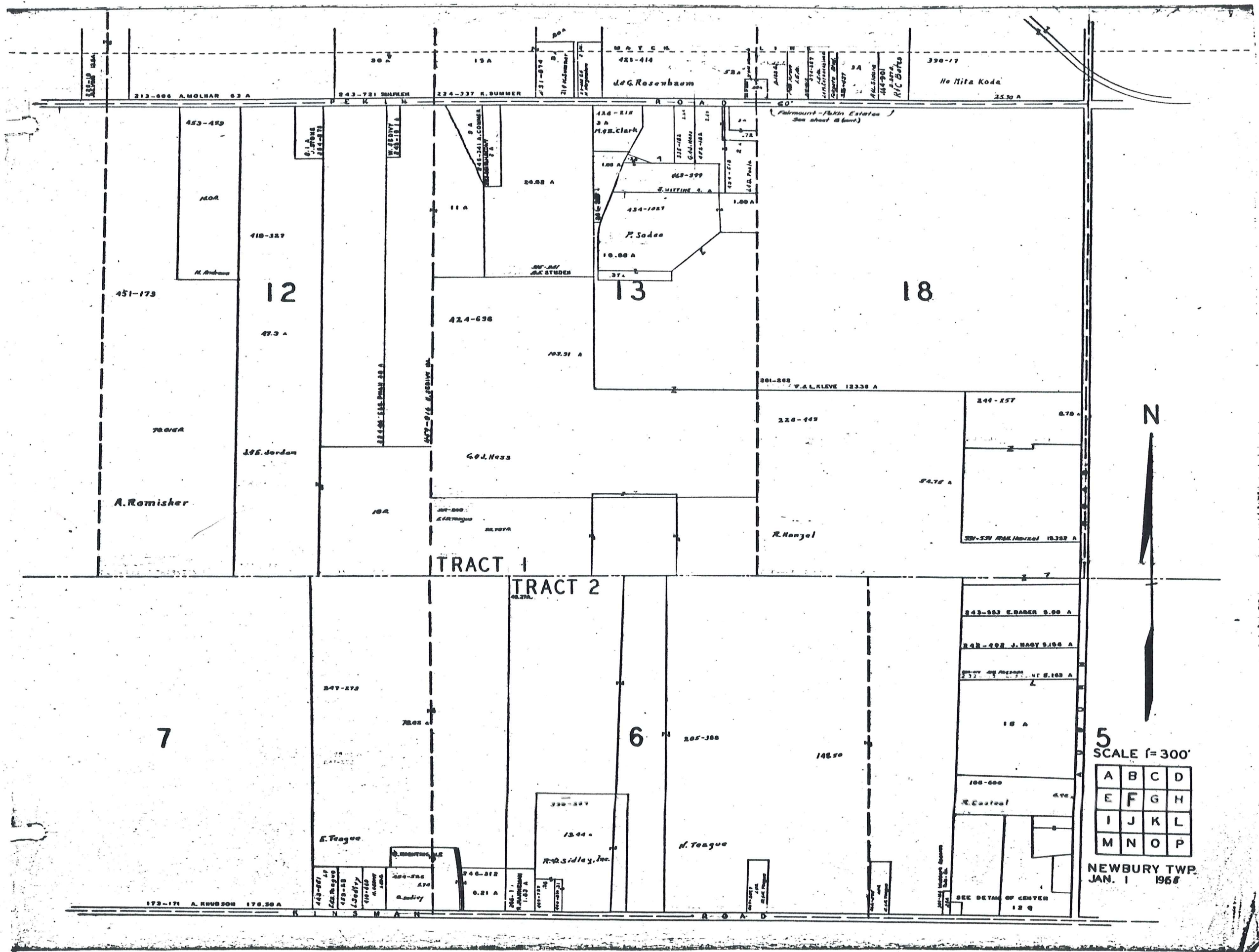
TRACT 1

TRACT 2

SCALE 1"=300'

A	B	C	D
E	F	G	H
I	J	K	L
M	N	O	P

NEWBURY TWP. JAN. 1 1866



5
SCALE 1" = 300'

A	B	C	D
E	F	G	H
I	J	K	L
M	N	O	P

NEWBURY TWP.
JAN. 1 1968

TRACT 1

TRACT 2

451-173

12

13

18

7

6

213-686 A. MOLNAR 63 A

243-721 SHAPREN

224-337 R. SUMNER

423-414
J.G. Rosenbaum

390-17
He Nita Koda

453-459
160A
N. Andrews

418-327
47.3 A

20.08 A
11 A
424-636
103.31 A

428-818
3 A
P.O. Clark
1.00 A
663-599
S. HATTING 2 A
434-1087
P. Sodas
10.00 A

(Fairmount - Fokin Estates)
See sheet 8 (cont.)
1.00 A
1.00 A
201-202
W.A.L. KLEVE 12338 A

780A
A. Romisher

196 Jordan

G.J. Ness

226-449

244-157
0.78 A

54.76 A

R. Hanzel

307-539 R.W. HANZEL 10322 A

247-172

780A

205-388

148.50

243-883 E. BAKER 5.00 A

242-402 J. WADY 5.100 A

332-1-2-3-4-5-6-7-8-9-10-11-12-13-14-15-16-17-18-19-20-21-22-23-24-25-26-27-28-29-30-31-32-33-34-35-36-37-38-39-40-41-42-43-44-45-46-47-48-49-50-51-52-53-54-55-56-57-58-59-60-61-62-63-64-65-66-67-68-69-70-71-72-73-74-75-76-77-78-79-80-81-82-83-84-85-86-87-88-89-90-91-92-93-94-95-96-97-98-99-100-101-102-103-104-105-106-107-108-109-110-111-112-113-114-115-116-117-118-119-120-121-122-123-124-125-126-127-128-129-130-131-132-133-134-135-136-137-138-139-140-141-142-143-144-145-146-147-148-149-150-151-152-153-154-155-156-157-158-159-160-161-162-163-164-165-166-167-168-169-170-171-172-173-174-175-176-177-178-179-180-181-182-183-184-185-186-187-188-189-190-191-192-193-194-195-196-197-198-199-200-201-202-203-204-205-206-207-208-209-210-211-212-213-214-215-216-217-218-219-220-221-222-223-224-225-226-227-228-229-230-231-232-233-234-235-236-237-238-239-240-241-242-243-244-245-246-247-248-249-250-251-252-253-254-255-256-257-258-259-260-261-262-263-264-265-266-267-268-269-270-271-272-273-274-275-276-277-278-279-280-281-282-283-284-285-286-287-288-289-290-291-292-293-294-295-296-297-298-299-300-301-302-303-304-305-306-307-308-309-310-311-312-313-314-315-316-317-318-319-320-321-322-323-324-325-326-327-328-329-330-331-332-333-334-335-336-337-338-339-340-341-342-343-344-345-346-347-348-349-350-351-352-353-354-355-356-357-358-359-360-361-362-363-364-365-366-367-368-369-370-371-372-373-374-375-376-377-378-379-380-381-382-383-384-385-386-387-388-389-390-391-392-393-394-395-396-397-398-399-400-401-402-403-404-405-406-407-408-409-410-411-412-413-414-415-416-417-418-419-420-421-422-423-424-425-426-427-428-429-430-431-432-433-434-435-436-437-438-439-440-441-442-443-444-445-446-447-448-449-450-451-452-453-454-455-456-457-458-459-460-461-462-463-464-465-466-467-468-469-470-471-472-473-474-475-476-477-478-479-480-481-482-483-484-485-486-487-488-489-490-491-492-493-494-495-496-497-498-499-500-501-502-503-504-505-506-507-508-509-510-511-512-513-514-515-516-517-518-519-520-521-522-523-524-525-526-527-528-529-530-531-532-533-534-535-536-537-538-539-540-541-542-543-544-545-546-547-548-549-550-551-552-553-554-555-556-557-558-559-560-561-562-563-564-565-566-567-568-569-570-571-572-573-574-575-576-577-578-579-580-581-582-583-584-585-586-587-588-589-590-591-592-593-594-595-596-597-598-599-600-601-602-603-604-605-606-607-608-609-610-611-612-613-614-615-616-617-618-619-620-621-622-623-624-625-626-627-628-629-630-631-632-633-634-635-636-637-638-639-640-641-642-643-644-645-646-647-648-649-650-651-652-653-654-655-656-657-658-659-660-661-662-663-664-665-666-667-668-669-670-671-672-673-674-675-676-677-678-679-680-681-682-683-684-685-686-687-688-689-690-691-692-693-694-695-696-697-698-699-700-701-702-703-704-705-706-707-708-709-710-711-712-713-714-715-716-717-718-719-720-721-722-723-724-725-726-727-728-729-730-731-732-733-734-735-736-737-738-739-740-741-742-743-744-745-746-747-748-749-750-751-752-753-754-755-756-757-758-759-760-761-762-763-764-765-766-767-768-769-770-771-772-773-774-775-776-777-778-779-780-781-782-783-784-785-786-787-788-789-790-791-792-793-794-795-796-797-798-799-800-801-802-803-804-805-806-807-808-809-810-811-812-813-814-815-816-817-818-819-820-821-822-823-824-825-826-827-828-829-830-831-832-833-834-835-836-837-838-839-840-841-842-843-844-845-846-847-848-849-850-851-852-853-854-855-856-857-858-859-860-861-862-863-864-865-866-867-868-869-870-871-872-873-874-875-876-877-878-879-880-881-882-883-884-885-886-887-888-889-890-891-892-893-894-895-896-897-898-899-900-901-902-903-904-905-906-907-908-909-910-911-912-913-914-915-916-917-918-919-920-921-922-923-924-925-926-927-928-929-930-931-932-933-934-935-936-937-938-939-940-941-942-943-944-945-946-947-948-949-950-951-952-953-954-955-956-957-958-959-960-961-962-963-964-965-966-967-968-969-970-971-972-973-974-975-976-977-978-979-980-981-982-983-984-985-986-987-988-989-990-991-992-993-994-995-996-997-998-999-1000

E. Teague

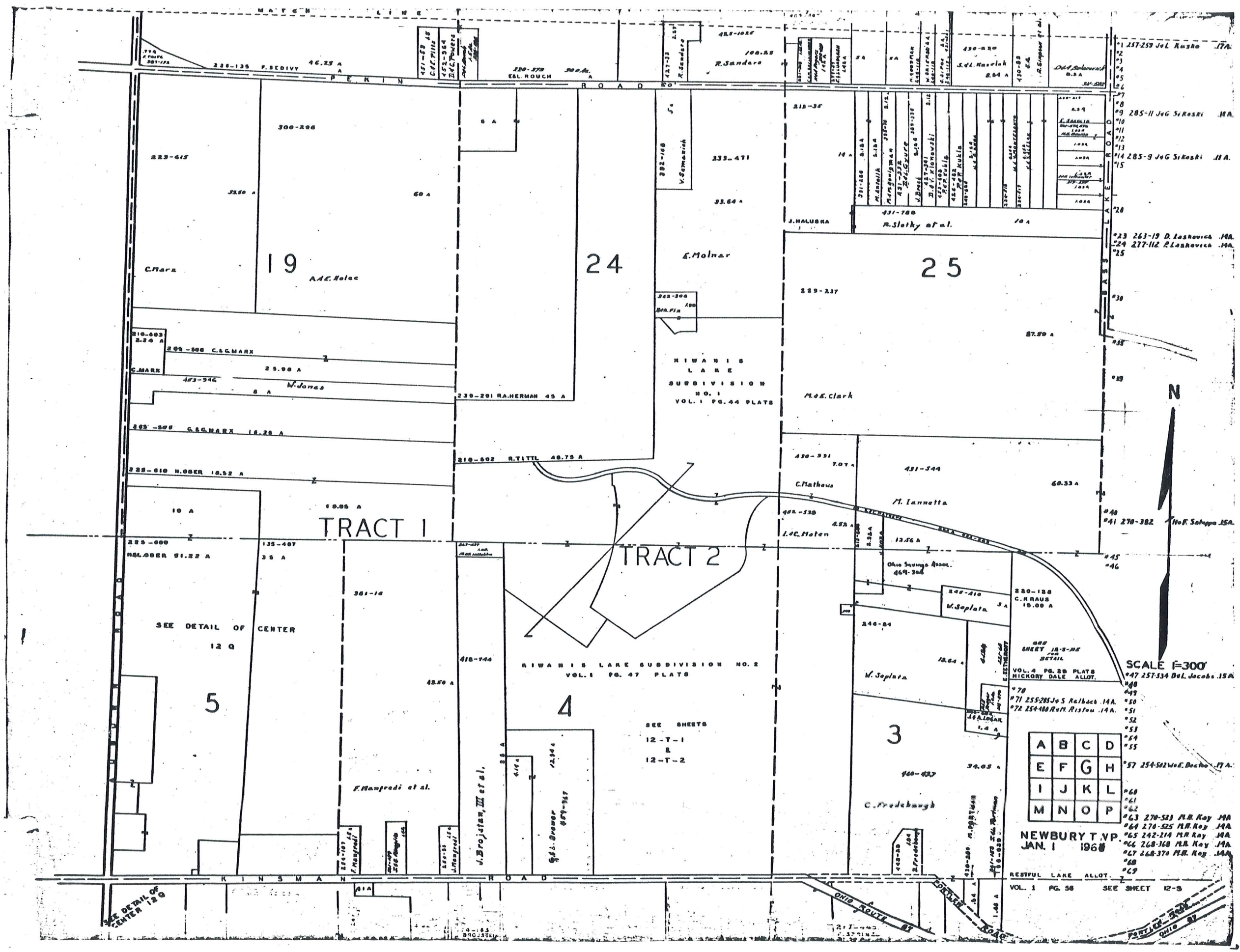
R.W. Sidley, Inc.

H. Teague

100-600
R. Coastal

173-171 A. HUBBARD 176.50 A

SEE DETAIL OF CENTER
12 Q



SEE DETAIL OF CENTER 12 Q

SEE DETAIL OF CENTER 12 Q

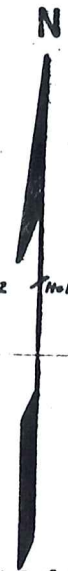
SEE SHEETS
12-T-1
R
12-T-2

A	B	C	D
E	F	G	H
I	J	K	L
M	N	O	P

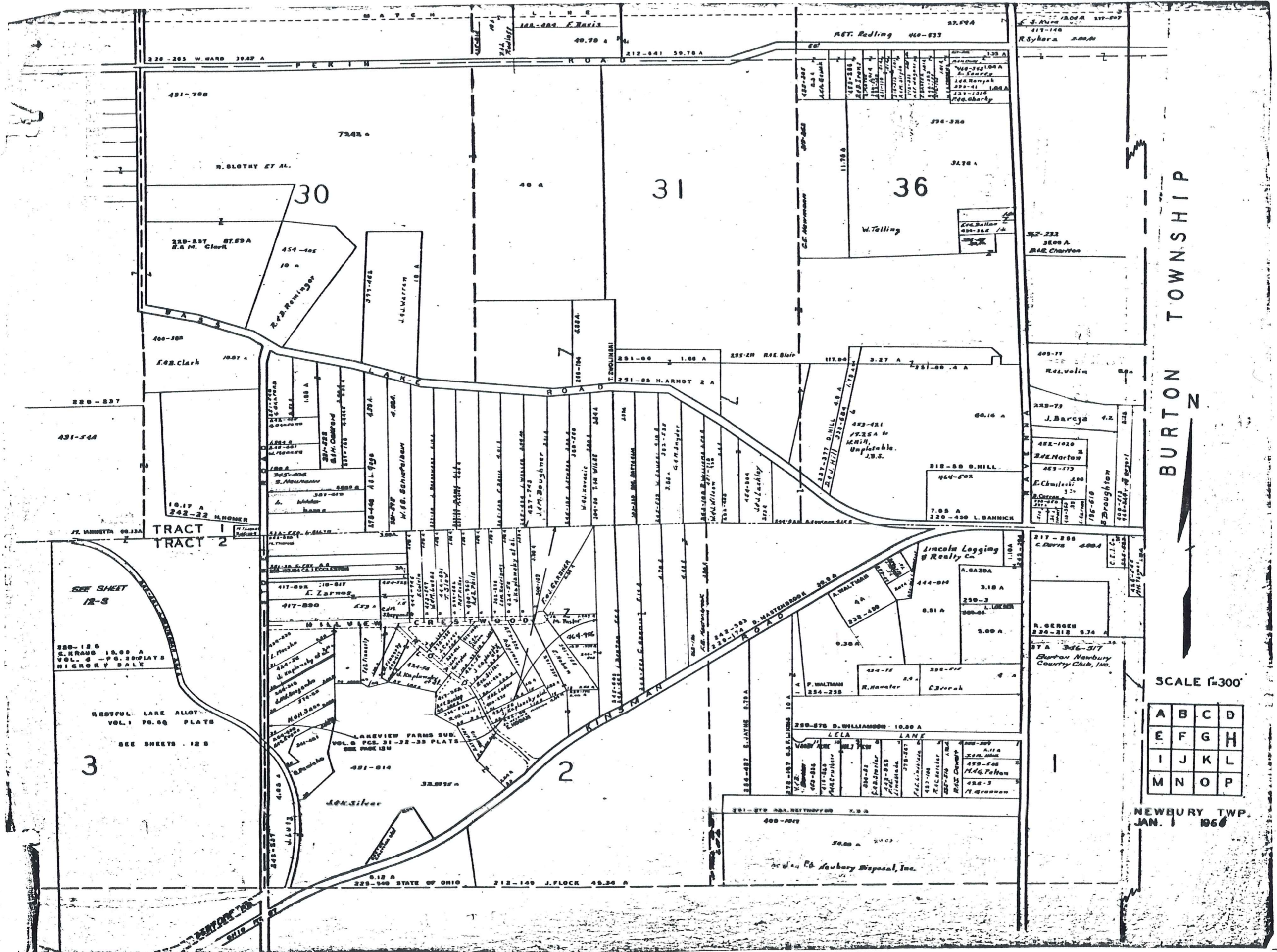
NEWBURY T.V.P.
JAN. 1 1968

RESTFUL LAKE ALLOT.
VOL. 1 PG. 58 SEE SHEET 12-S

SCALE 1"=300'



- *1 257-259 Jol. Kusko 17A.
- *2
- *3
- *4
- *5
- *6
- *7
- *8
- *9 285-11 JEG SIKOSKI 18A.
- *10
- *11
- *12
- *13
- *14 285-9 JEG SIKOSKI 18A.
- *15
- *16
- *17
- *18
- *19
- *20
- *21
- *22
- *23 263-19 D. Lashovich 18A.
- *24 277-112 P. Lashovich 18A.
- *25
- *26
- *27
- *28
- *29
- *30
- *31
- *32
- *33
- *34
- *35
- *36
- *37
- *38
- *39
- *40
- *41 270-382 Ho. F. Saloppo 15A.
- *42
- *43
- *44
- *45
- *46
- *47 257-334 Del. Jacobs 15A.
- *48
- *49
- *50
- *51
- *52
- *53
- *54
- *55
- *56
- *57 254-501 W. E. Bucher 17A.
- *58
- *59
- *60
- *61
- *62
- *63 270-523 P.R. Kay 18A.
- *64 270-525 P.R. Kay 18A.
- *65 242-214 P.R. Kay 18A.
- *66 268-368 P.R. Kay 18A.
- *67 268-370 P.R. Kay 18A.
- *68
- *69



BURTON TOWNSHIP
 NEWBURY TWP.
 JAN. 1 1966

SCALE 1"=300'

A	B	C	D
E	F	G	H
I	J	K	L
M	N	O	P

NEWBURY TWP.
JAN. 1 1966

TRACT 1
TRACT 2

SEE SHEET
12-3

220-120
S. H. RANS
VOL. 4 - PG. 20 PLATS
NICKORY DALE

RESTFUL LAKE ALLOT.
VOL. 1 PG. 60 PLATS

SEE SHEETS 12 3

LAKESHORE SUB.
VOL. 6 PGS. 31-32-33 PLATS
SEE PAGE 120

250-575 D. WILLIAMSON - 10.00 A
LELA LANE

250-575	250-576	250-577	250-578	250-579	250-580	250-581	250-582	250-583	250-584	250-585	250-586	250-587	250-588	250-589	250-590	250-591	250-592	250-593	250-594	250-595	250-596	250-597	250-598	250-599	250-600	
W. J.

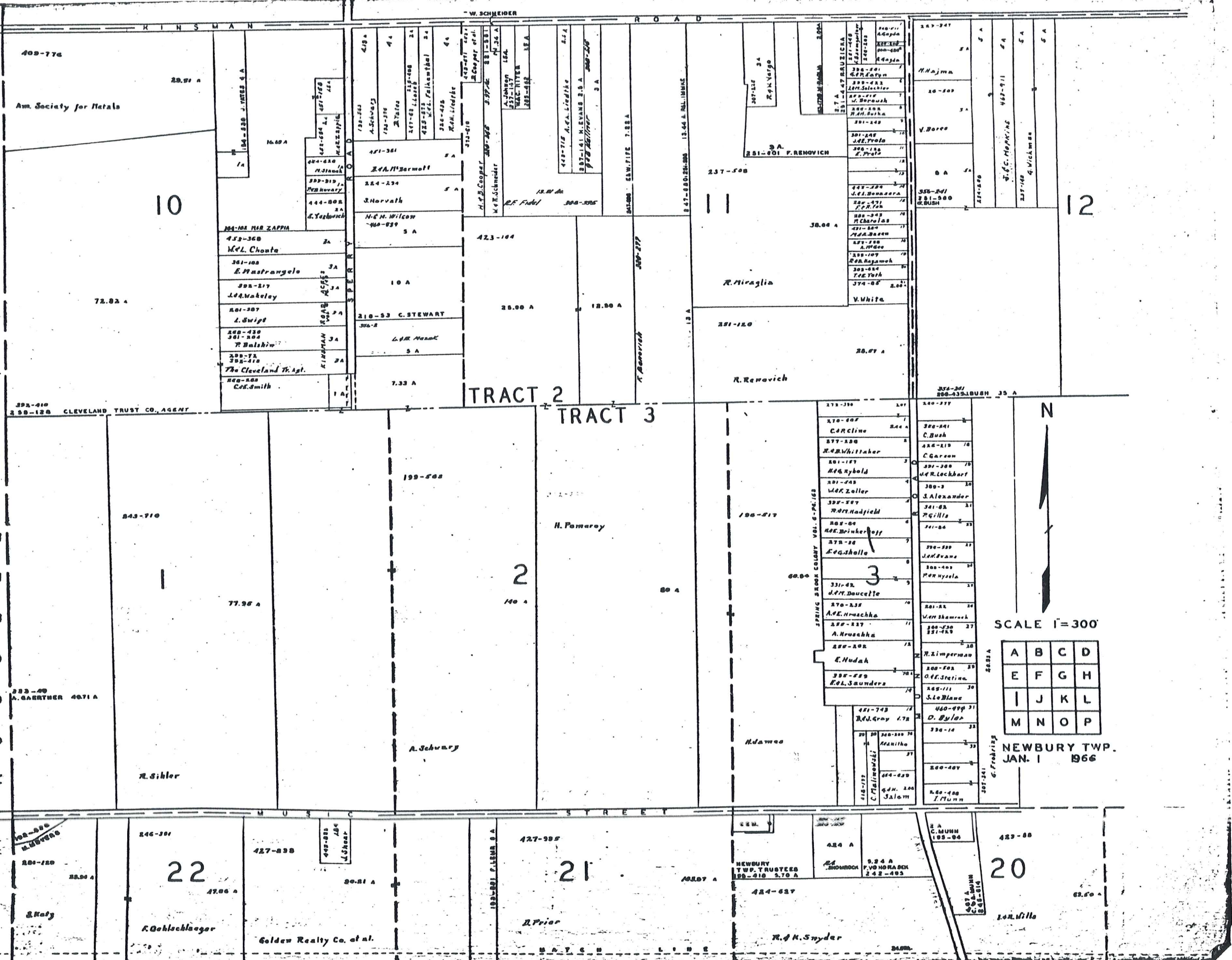
251-575 D. WILLIAMSON 7.00 A

400-104

30.00 A

NEWBURY DISPOSAL, INC.

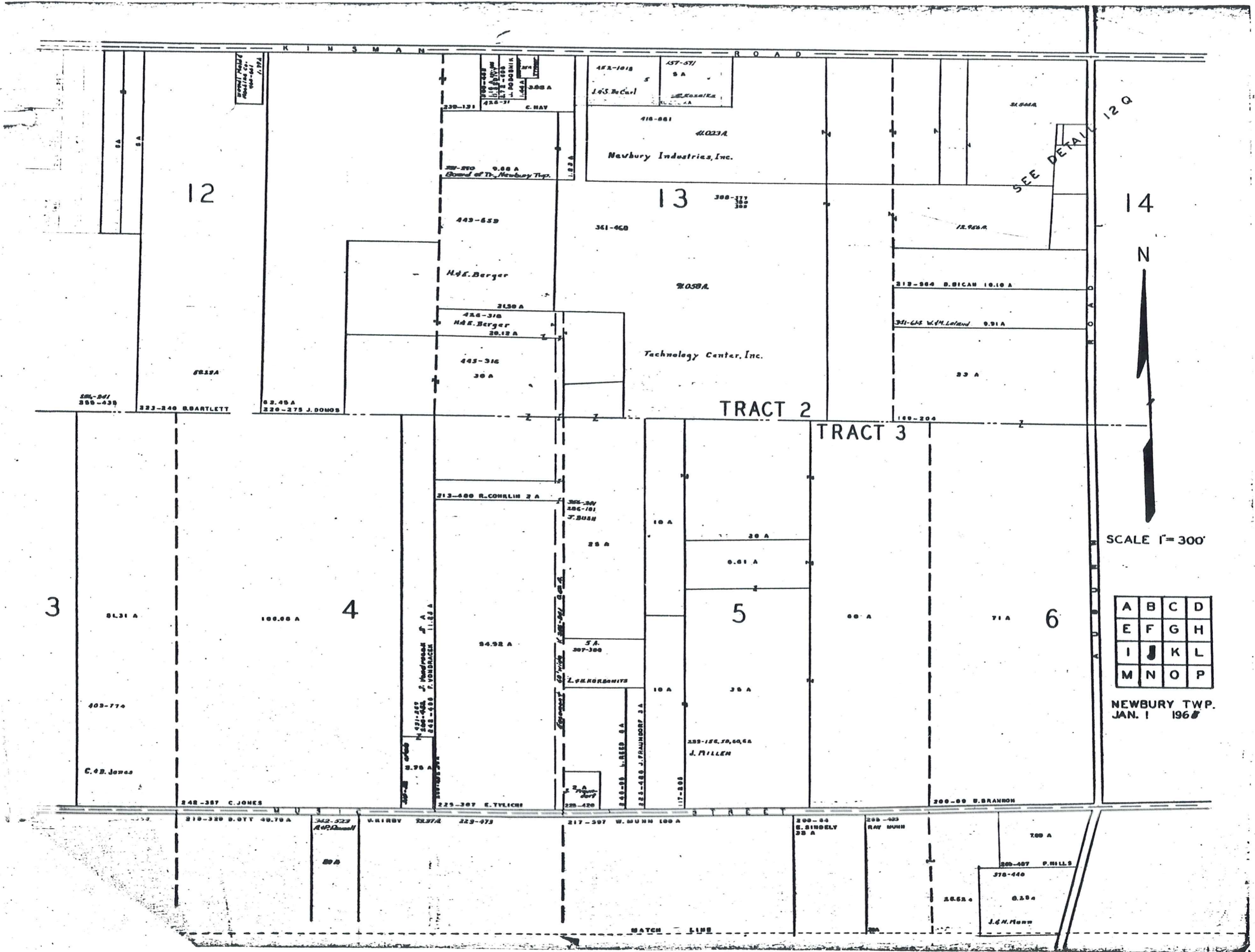
R
U
S
S
E
L
L
T
O
W
N
S
H
I
P



SCALE 1"=300'

A	B	C	D
E	F	G	H
I	J	K	L
M	N	O	P

NEWBURY TWP.
JAN. 1 1966



SEE DETAIL 12 Q

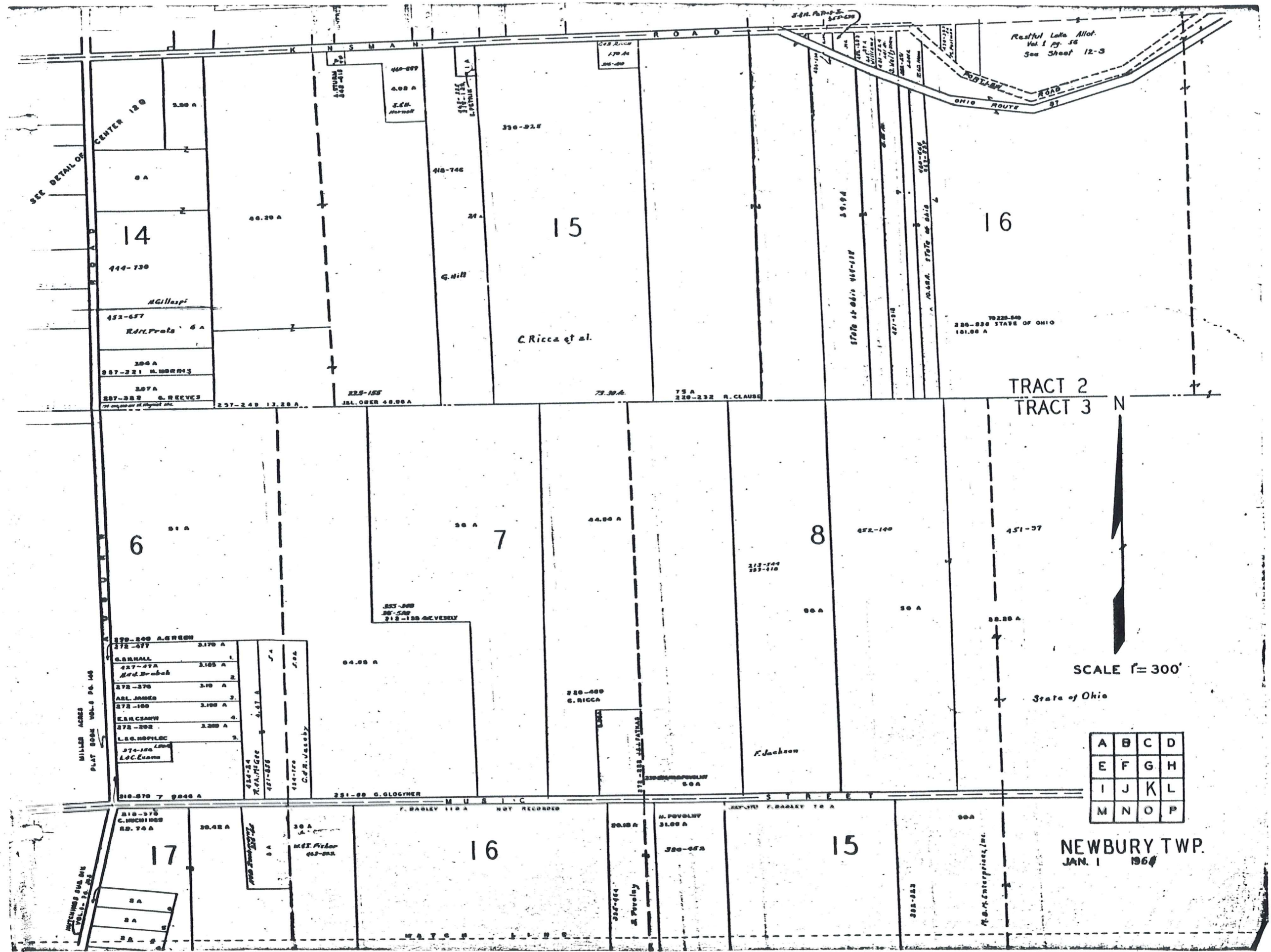


SCALE 1" = 300'

A	B	C	D
E	F	G	H
I	J	K	L
M	N	O	P

NEWBURY TWP.
JAN. 1 1968

MATCH LINE



Restful Lake Allot.
Vol. 1 pg. 56
See Sheet 12-3

TO 225-340
225-330 STATE OF OHIO
101.00 A

TRACT 2
TRACT 3

SCALE 1" = 300'

State of Ohio

A	B	C	D
E	F	G	H
I	J	K	L
M	N	O	P

NEWBURY TWP.
JAN. 1 1964

MILLER ACRES
PLAT BOOK VOL. 9 P. 148

370-380 AGREED	3.170 A
372-377	
G.B. HALL	1.165 A
427-37A	
Med. Dr. abak	
372-376	3.10 A
ARL JAMES	
372-160	3.100 A
K.A. CSANY	
372-202	3.200 A
L.G. HOPKIN	
374-180	
L.C. Evans	
310-370	7 0240 A

14

15

16

6

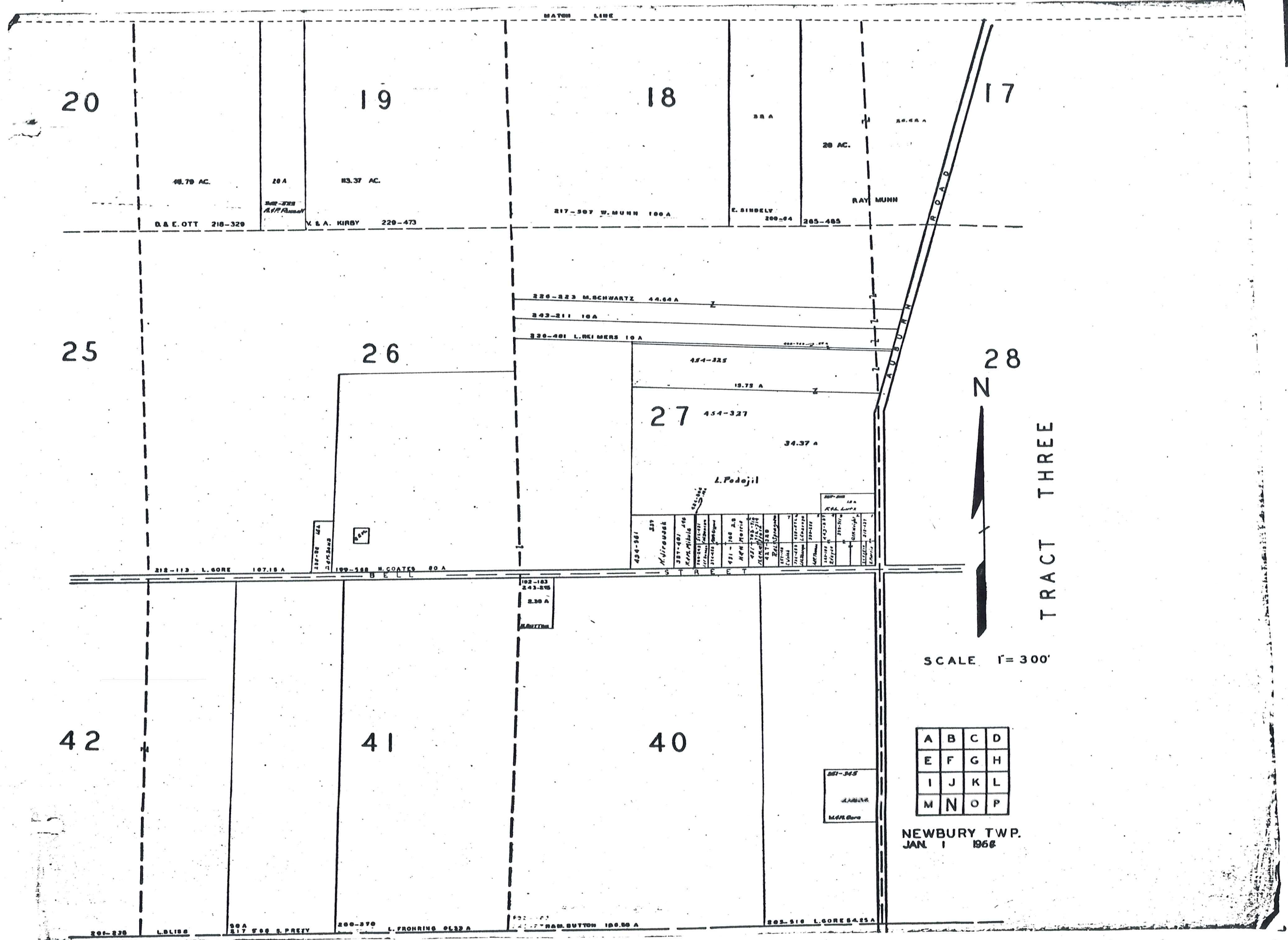
7

8

16

15

17



20

19

18

17

25

26

27

28

42

41

40

TRACT THREE

SCALE 1" = 300'

A	B	C	D
E	F	G	H
I	J	K	L
M	N	O	P

NEWBURY TWP.
JAN 1 1966

48.78 AC.

83.37 AC.

28 AC.

D & E. OTT 218-329

V. & A. KIRBY 229-473

217-307 W. MUNN 100 A

E. SINDELY 200-94

265-485

RAY MUNN

226-223 M. SCHWARTZ 44.64 A

242-211 10 A

220-401 L. REIMERS 10 A

454-325

19.73 A

454-327

34.37 A

L. Podojil

212-112 L. GORE 107.18 A

199-188 H. COATES 80 A

102-103 243-205 2.30 A

RAMBUTON

RAMBUTON

RAMBUTON

RAMBUTON

RAMBUTON

RAMBUTON

RAMBUTON

RAMBUTON

RAMBUTON

RAMBUTON

RAMBUTON

RAMBUTON

RAMBUTON

RAMBUTON

RAMBUTON

RAMBUTON

RAMBUTON

RAMBUTON

RAMBUTON

RAMBUTON

RAMBUTON

RAMBUTON

RAMBUTON

RAMBUTON

RAMBUTON

RAMBUTON

RAMBUTON

RAMBUTON

RAMBUTON

RAMBUTON

RAMBUTON

RAMBUTON

RAMBUTON

RAMBUTON

RAMBUTON

RAMBUTON

RAMBUTON

RAMBUTON

201-245

JANES

MARSON

201-228

L. BLISS

90 A

217 W. S. PREY

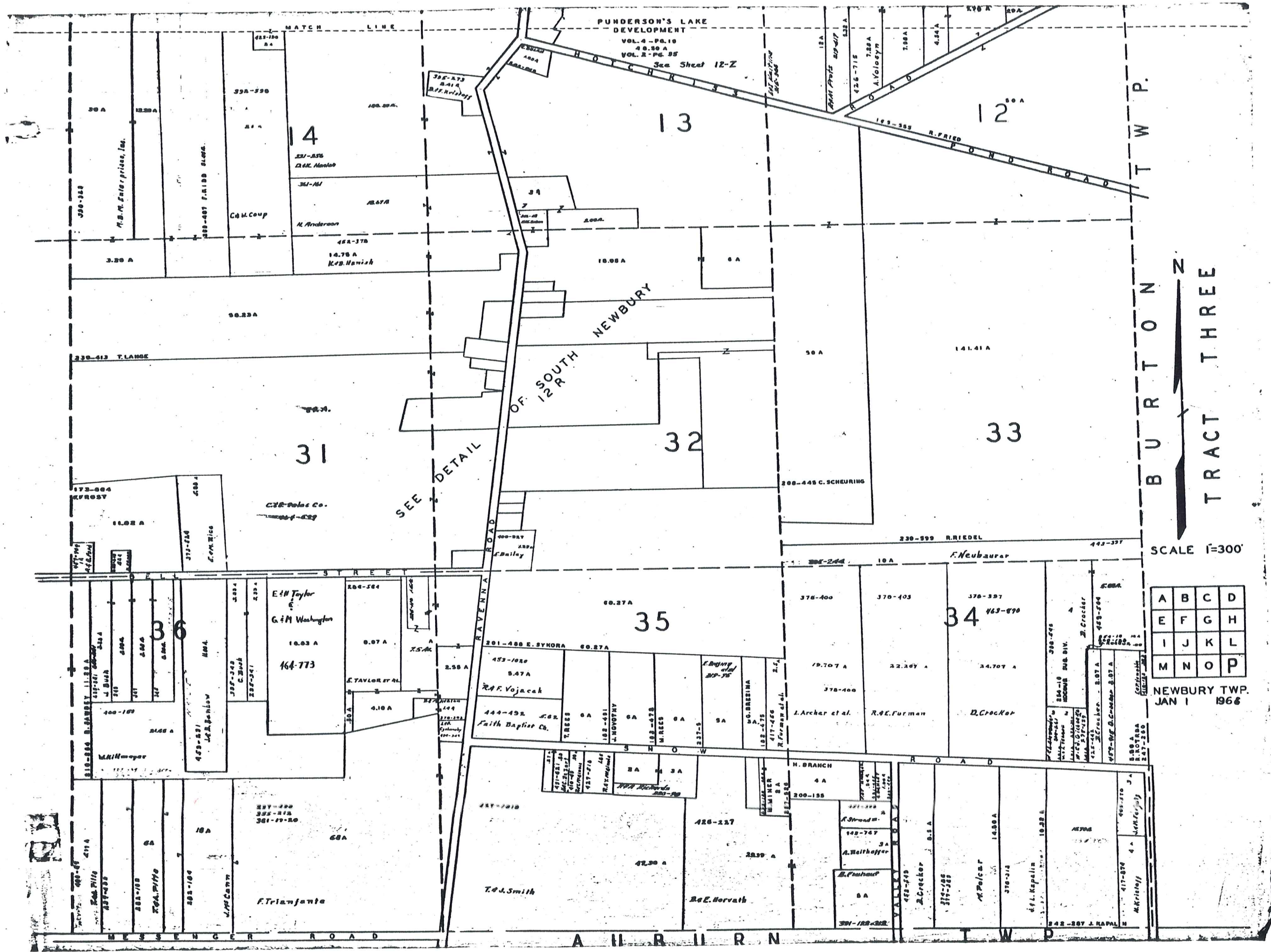
200-370

L. FROHRING 96.32 A

202-177

RAMBUTON 100.00 A

203-516 L. GORE 54.25 A



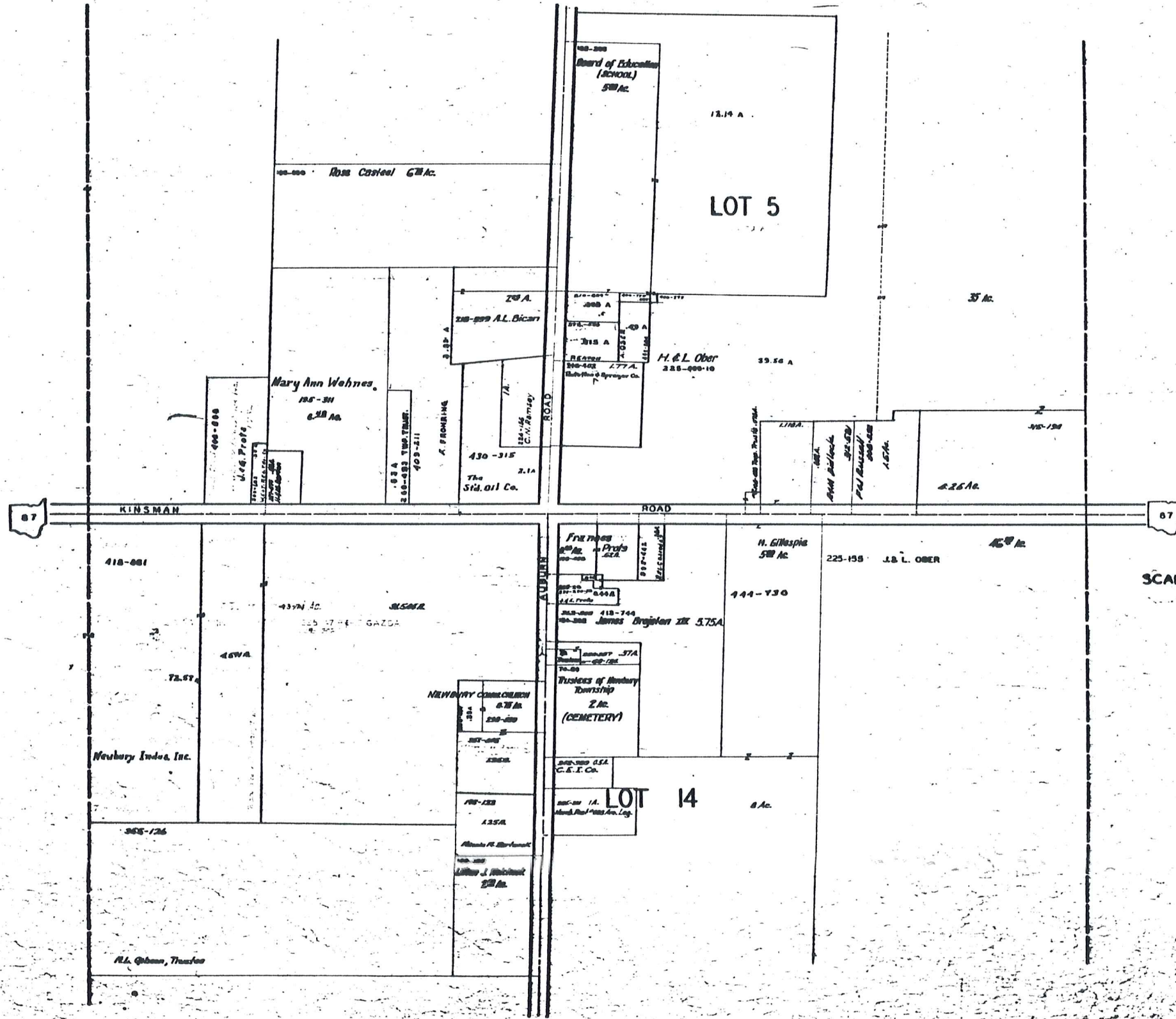
BURTON TWP.
 TRACT THREE

SCALE 1"=300'

A	B	C	D
E	F	G	H
I	J	K	L
M	N	O	P

NEWBURY TWP.
JAN 1 1966

NEWBURY T.P. CENTER

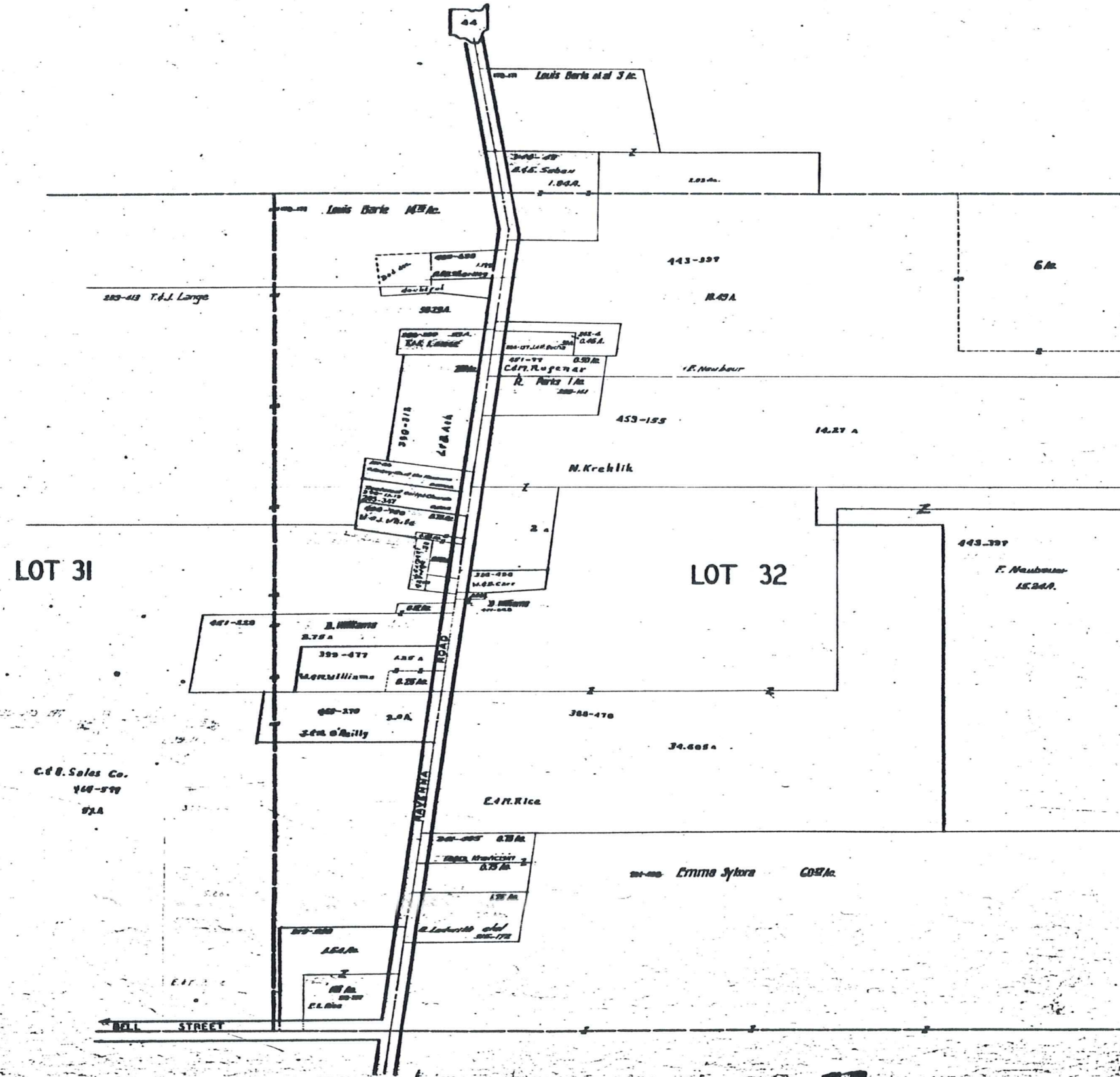


SCALE 1"=25CH=165FT.

JAN. 1, 1968

12-Q

NEWBURY TP. SOUTH NEWBURY



SCALE 1"=25' OR 1"=165'

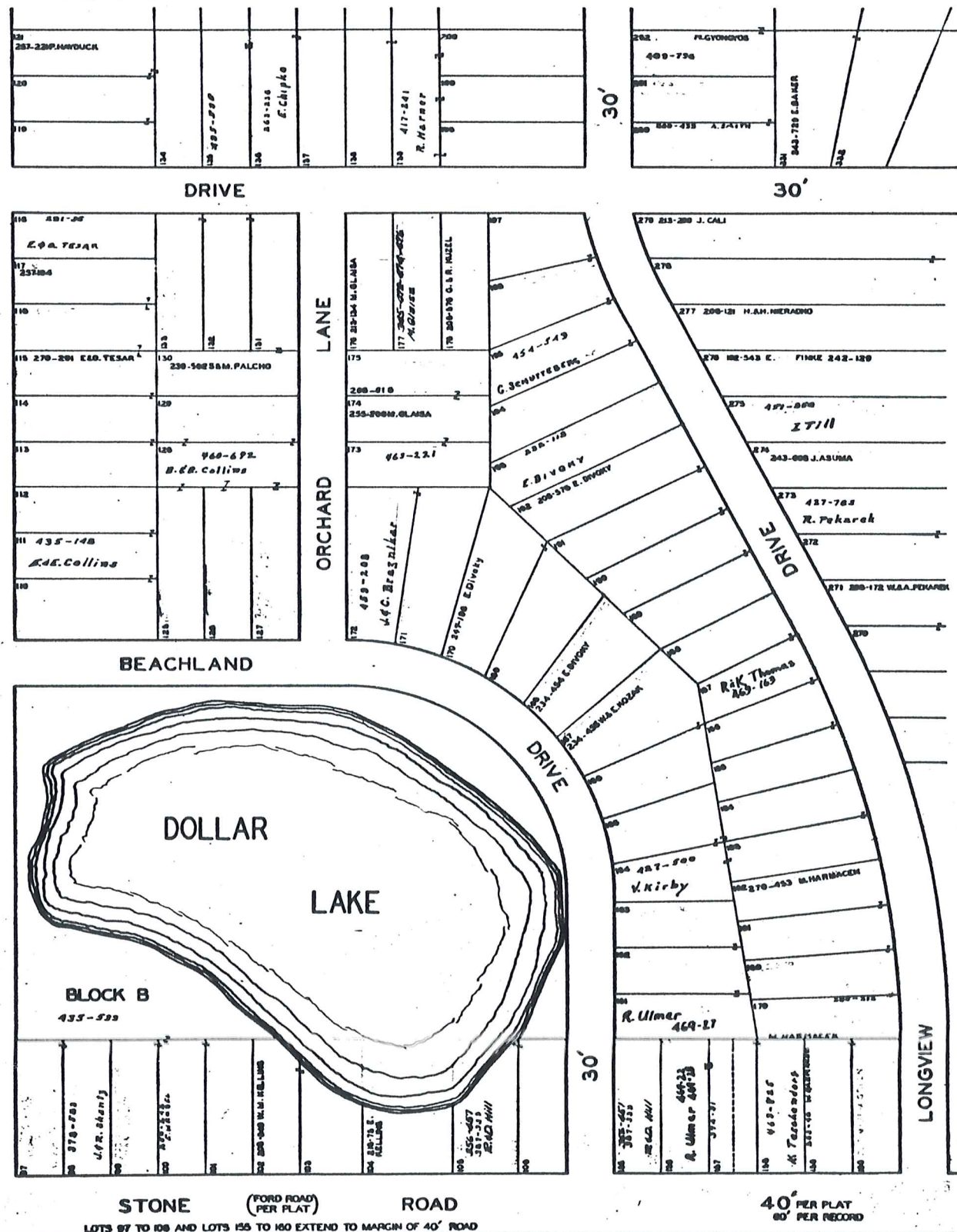
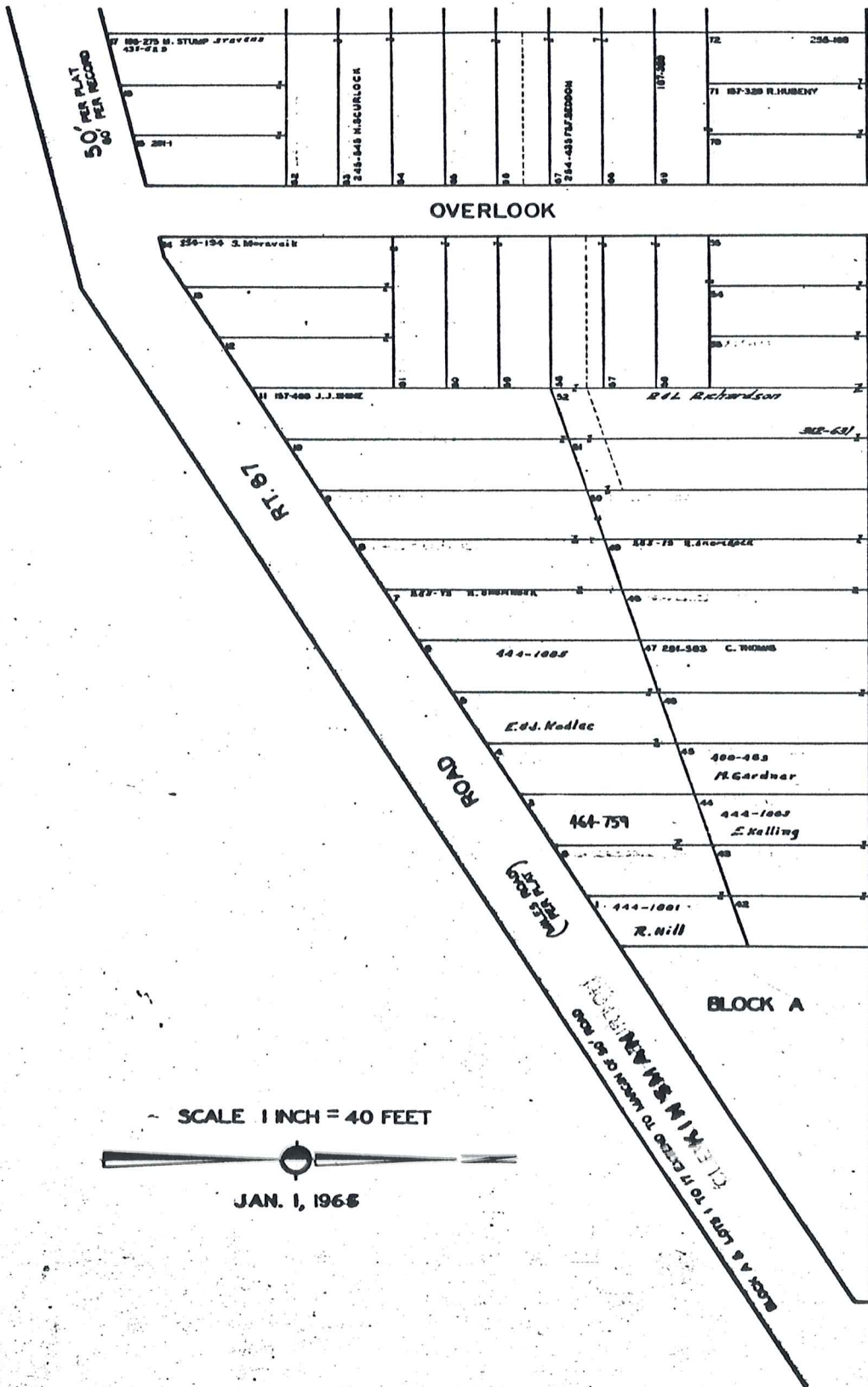
JAN 1, 1968

12-R

THE RELIANCE INVESTMENT CO'S
RESTFUL LAKE ALLOTMENT

BEING PART OF ORIGINAL LOTS NOS. 3 & 16 OF TRACT 2 NEWBURY TOWNSHIP
VOL. 1 PAGES 56 & 57 REC. OF PLATS

SEE 12 - S - S.W.



SEE 12 - S - N.E.

12-S

THE RELIANCE INVESTMENT CO'S
RESTFUL LAKE ALLOTMENT

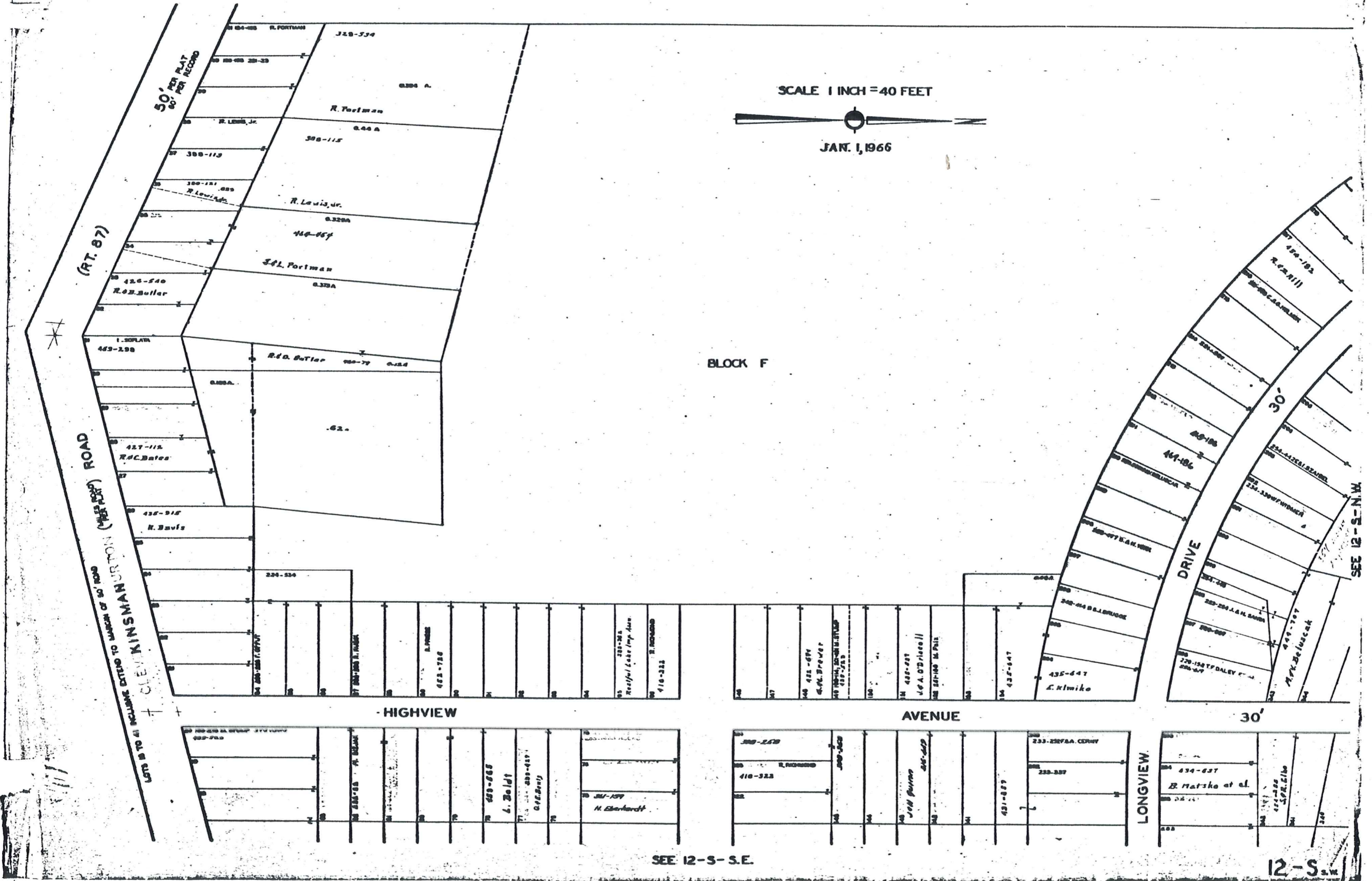
BEING PART OF ORIGINAL LOTS NOS. 3 & 16 OF TRACT 2 NEWBURY TOWNSHIP
VOL. 1 PAGES 56 & 57 REC. OF PLATS

SCALE 1 INCH = 40 FEET



JAN. 1, 1966

BLOCK F



SEE 12-S-S.E.

12-S-S.W.

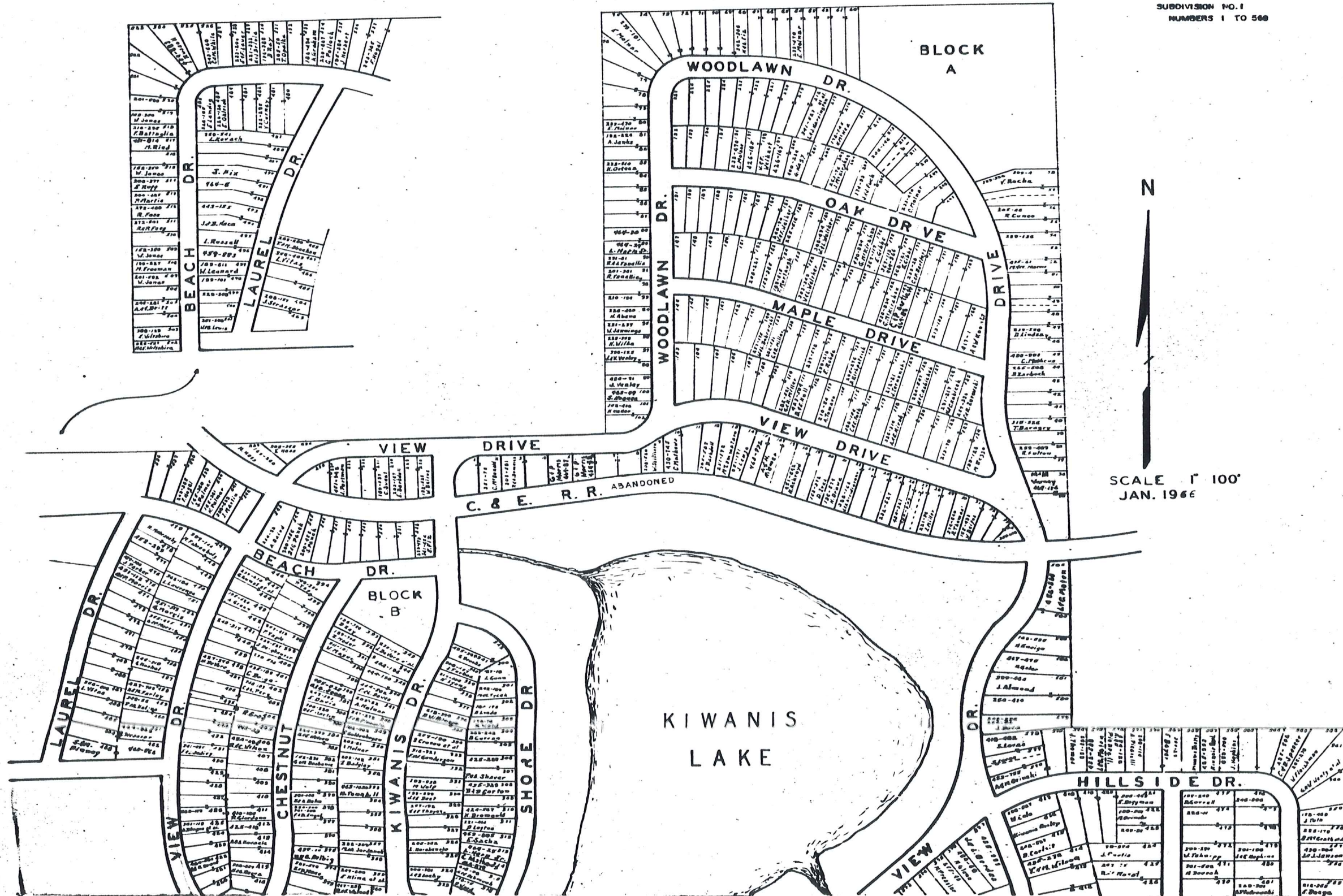
SEE 12-S-N.W.

KIWANIS LAKE SUB.

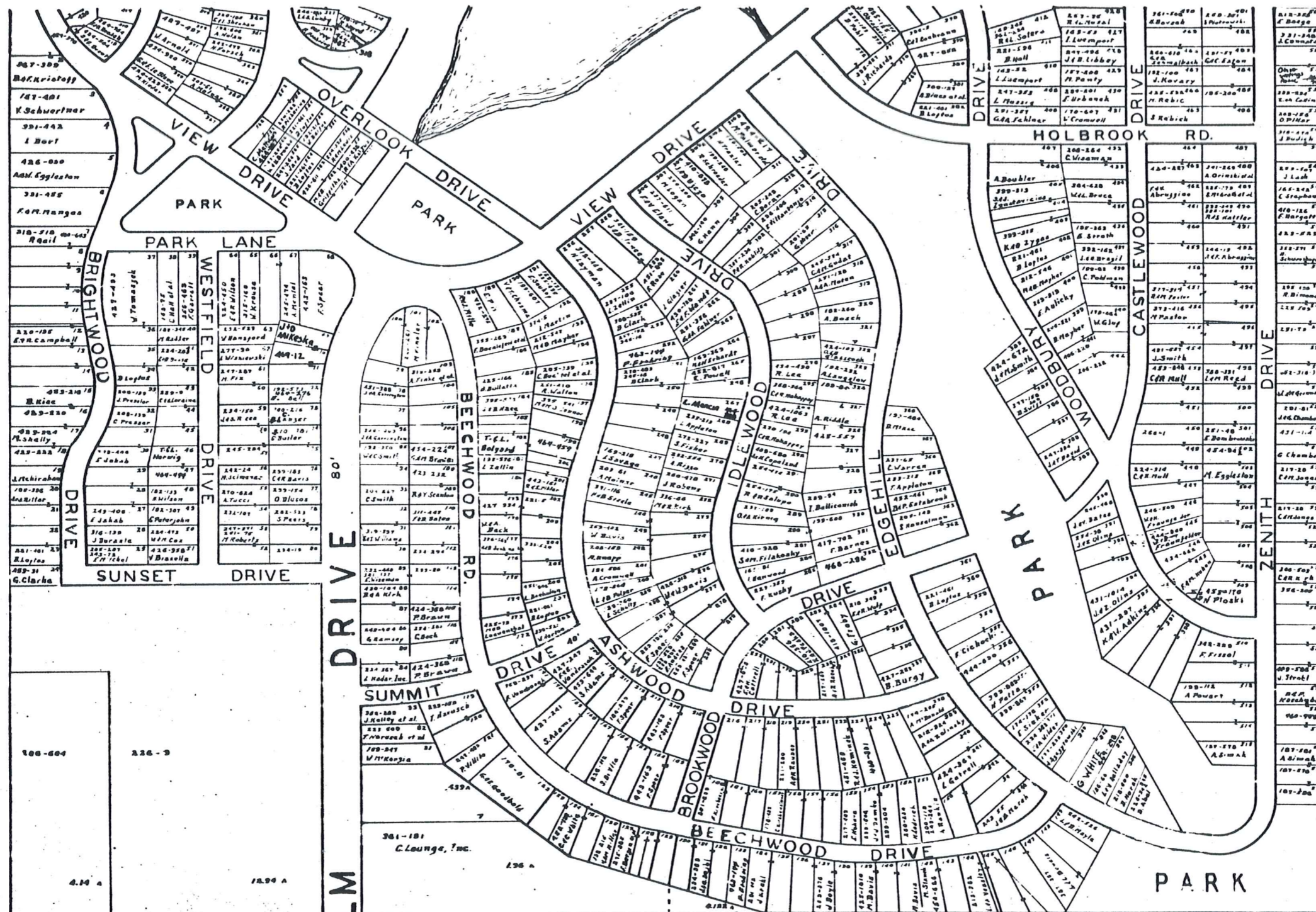
VOL. 1-PGS. 44 TO 49 PLATS

NEWBURY TWP. LOT 24 TR. 1 & LOTS 3 & 4 TR. 2

SUBDIVISION NO. 1
NUMBERS 1 TO 500



12-T-1



SCALE 1" = 100'

JAN 1966

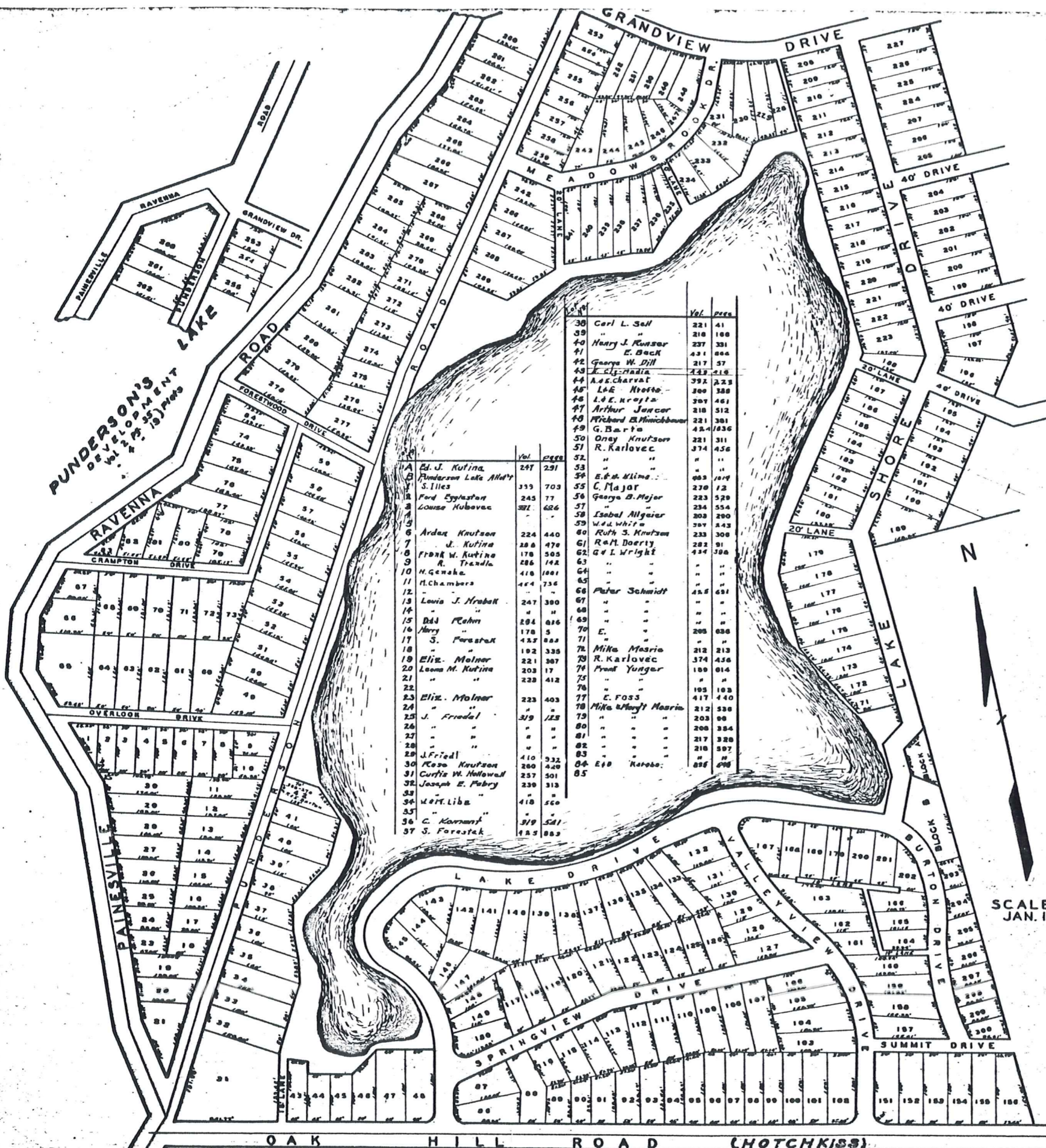
KIWANIS LAKE SUB.

VOL. I - PGS. 44 TO 49 PLATS

SUBDIVISION NO. 2

NUMBERS 1 TO 565

12-T-2



No.	Name	Vol.	Page	No.	Name	Vol.	Page
30	Carl L. Sell	221	41	52	"	"	"
31	"	210	160	53	"	"	"
32	Henry J. Kusner	237	331	54	E. & M. Malone	603	1049
33	E. Beck	431	884	55	C. Major	270	12
34	George W. Dill	217	57	56	George B. Major	223	520
35	"	"	"	57	Isabel Mlygar	234	554
36	"	"	"	58	M. & J. White	309	280
37	"	"	"	59	Ruth S. Knutson	233	308
38	"	"	"	60	R. M. Doerty	282	91
39	"	"	"	61	G. L. Wright	434	306
40	"	"	"	62	"	"	"
41	"	"	"	63	"	"	"
42	"	"	"	64	"	"	"
43	"	"	"	65	"	"	"
44	"	"	"	66	Peter Schmidt	435	691
45	"	"	"	67	"	"	"
46	"	"	"	68	"	"	"
47	"	"	"	69	"	"	"
48	"	"	"	70	"	"	"
49	"	"	"	71	"	"	"
50	"	"	"	72	Mika Maarjo	218	212
51	"	"	"	73	R. Karlovac	374	456
52	"	"	"	74	Frank Yungler	180	814
53	"	"	"	75	"	"	"
54	"	"	"	76	"	"	"
55	"	"	"	77	"	"	"
56	"	"	"	78	"	"	"
57	"	"	"	79	"	"	"
58	"	"	"	80	"	"	"
59	"	"	"	81	"	"	"
60	"	"	"	82	"	"	"
61	"	"	"	83	"	"	"
62	"	"	"	84	"	"	"
63	"	"	"	85	"	"	"
64	"	"	"	"	"	"	"
65	"	"	"	"	"	"	"
66	"	"	"	"	"	"	"
67	"	"	"	"	"	"	"
68	"	"	"	"	"	"	"
69	"	"	"	"	"	"	"
70	"	"	"	"	"	"	"
71	"	"	"	"	"	"	"
72	"	"	"	"	"	"	"
73	"	"	"	"	"	"	"
74	"	"	"	"	"	"	"
75	"	"	"	"	"	"	"
76	"	"	"	"	"	"	"
77	"	"	"	"	"	"	"
78	"	"	"	"	"	"	"
79	"	"	"	"	"	"	"
80	"	"	"	"	"	"	"
81	"	"	"	"	"	"	"
82	"	"	"	"	"	"	"
83	"	"	"	"	"	"	"
84	"	"	"	"	"	"	"
85	"	"	"	"	"	"	"
86	"	"	"	"	"	"	"
87	"	"	"	"	"	"	"
88	"	"	"	"	"	"	"
89	"	"	"	"	"	"	"
90	"	"	"	"	"	"	"
91	"	"	"	"	"	"	"
92	"	"	"	"	"	"	"
93	"	"	"	"	"	"	"
94	"	"	"	"	"	"	"
95	"	"	"	"	"	"	"
96	"	"	"	"	"	"	"
97	"	"	"	"	"	"	"
98	"	"	"	"	"	"	"
99	"	"	"	"	"	"	"
100	"	"	"	"	"	"	"
101	"	"	"	"	"	"	"
102	"	"	"	"	"	"	"
103	"	"	"	"	"	"	"
104	"	"	"	"	"	"	"
105	"	"	"	"	"	"	"
106	"	"	"	"	"	"	"
107	"	"	"	"	"	"	"
108	"	"	"	"	"	"	"
109	"	"	"	"	"	"	"
110	"	"	"	"	"	"	"
111	"	"	"	"	"	"	"
112	"	"	"	"	"	"	"
113	"	"	"	"	"	"	"
114	"	"	"	"	"	"	"
115	"	"	"	"	"	"	"
116	"	"	"	"	"	"	"
117	"	"	"	"	"	"	"
118	"	"	"	"	"	"	"
119	"	"	"	"	"	"	"
120	"	"	"	"	"	"	"
121	"	"	"	"	"	"	"
122	"	"	"	"	"	"	"
123	"	"	"	"	"	"	"
124	"	"	"	"	"	"	"
125	"	"	"	"	"	"	"
126	"	"	"	"	"	"	"
127	"	"	"	"	"	"	"
128	"	"	"	"	"	"	"
129	"	"	"	"	"	"	"
130	"	"	"	"	"	"	"
131	"	"	"	"	"	"	"
132	"	"	"	"	"	"	"
133	"	"	"	"	"	"	"
134	"	"	"	"	"	"	"
135	"	"	"	"	"	"	"
136	"	"	"	"	"	"	"
137	"	"	"	"	"	"	"
138	"	"	"	"	"	"	"
139	"	"	"	"	"	"	"
140	"	"	"	"	"	"	"
141	"	"	"	"	"	"	"
142	"	"	"	"	"	"	"
143	"	"	"	"	"	"	"
144	"	"	"	"	"	"	"
145	"	"	"	"	"	"	"
146	"	"	"	"	"	"	"
147	"	"	"	"	"	"	"
148	"	"	"	"	"	"	"
149	"	"	"	"	"	"	"
150	"	"	"	"	"	"	"
151	"	"	"	"	"	"	"
152	"	"	"	"	"	"	"
153	"	"	"	"	"	"	"
154	"	"	"	"	"	"	"
155	"	"	"	"	"	"	"
156	"	"	"	"	"	"	"
157	"	"	"	"	"	"	"
158	"	"	"	"	"	"	"
159	"	"	"	"	"	"	"
160	"	"	"	"	"	"	"
161	"	"	"	"	"	"	"
162	"	"	"	"	"	"	"
163	"	"	"	"	"	"	"
164	"	"	"	"	"	"	"
165	"	"	"	"	"	"	"
166	"	"	"	"	"	"	"
167	"	"	"	"	"	"	"
168	"	"	"	"	"	"	"
169	"	"	"	"	"	"	"
170	"	"	"	"	"	"	"
171	"	"	"	"	"	"	"
172	"	"	"	"	"	"	"
173	"	"	"	"	"	"	"
174	"	"	"	"	"	"	"
175	"	"	"	"	"	"	"
176	"	"	"	"	"	"	"
177	"	"	"	"	"	"	"
178	"	"	"	"	"	"	"
179	"	"	"	"	"	"	"
180	"	"	"	"	"	"	"
181	"	"	"	"	"	"	"
182	"	"	"	"	"	"	"
183	"	"	"	"	"	"	"
184	"	"	"	"	"	"	"
185	"	"	"	"	"	"	"
186	"	"	"	"	"	"	"
187	"	"	"	"	"	"	"
188	"	"	"	"	"	"	"
189	"	"	"	"	"	"	"
190	"	"	"	"	"	"	"
191	"	"	"	"	"	"	"
192	"	"	"	"	"	"	"
193	"	"	"	"	"	"	"
194	"	"	"	"	"	"	"
195	"	"	"	"	"	"	"
196	"	"	"	"	"	"	"
197	"	"	"	"	"	"	"
198	"	"	"	"	"	"	"
199	"	"	"	"	"	"	"
200	"	"	"	"	"	"	"

No.	Name	Vol.	Page	No.	Name	Vol.	Page
86	L. J. Reichard	333	540	179	M. Shupp	417	122
87	"	"	"	200	"	"	"
88	"	"	"	201	"	"	"
89	Charles F. Bulew	203	590	202	"	"	"
90	M. Ruppelmeier	216	19	203	"	"	"
91	"	"	"	204	Punderson Lake Mnt'l	"	"
92	"	"	"	205	Eva Johnson	230	508
93	E. L. Thacker	351	328	206	"	"	"
94	Geo. George	233	310	207	"	"	"
95	"	"	"	208	R. G. Ogirt	357	256
96	"	"	"	209	"	"	"
97	"	"	"	210	"	"	"
98	"	"	"	211	"	"	"
99	"	"	"	212	"	"	"
100	"	"	"	213	E. Johnson	307	100
101	"	"	"	214	C. Schroeder	384	181
102	"	"	"	215	C. W. Schaeffer	886	618
103	"	"	"	216	"	"	"
104	"	"	"	217	"	"	"
105	"	"	"	218	Virgil G. Stolley	229	385
106	"	"	"	219	Helen Hajduk	255	591
107	"	"	"	220	E. C. Stachura	300	456
108	"	"	"	221	R. R. Martell	320	251
109	M. A. Lee	421	513	222	"	"	"
110	"	"	"	223	R. J. Surckla	371	47
111	Michael Volokan	233	10	224	"	"	"
112	"	"	"	225	Eva Johnson	230	508
113	Franklin J. Brown	242	218	226	A. F. Ball	307	77
114	A. Sotavik	207	500	227	"	"	"
115	"	"	"	228	"	"	"
116	"	"	"	229	"	"	"
117	S. H. Horvath	370	277	230	Helen Kellofay	464	183, 17
118	"	"	"	231	"	"	"
119	"	"	"	232	"	"	"
120	"	"	"	233	"	"	"
121	"	"	"	234	"	"	"
122	"	"	"	235	"	"	"
123	"	"	"	236	"	"	"
124	"	"	"	237	"	"	"
125	"	"	"	238	"	"	"
126	"	"	"	239	"	"	"
127	Michael Volokan	225	557	240	"	"	"
128	"	"	"	241	"	"	"
129	"	"	"	242	"	"	"
130	Berny J. Dubsky	225	822	243	"	"	"
131	"	"	"	244	"	"	"
132	"	"	"	245	"	"	"
133	"	"	"	246	"	"	"
134	"	"	"	247	"	"	"
135	"	"	"	248	"	"	"
136	"	"	"	249	"	"	"
137	"	"	"	250	"	"	"
138	"	"	"	251	"	"	"
139	"	"	"	252	"	"	"
140	"	"	"	253	"	"	"
141	"	"	"	254	"	"	"
142	"	"	"	255	"	"	"
143	"	"	"	256	"	"	"
144	"	"	"	257	"	"	"
145	"	"	"	258	"	"	"
146	"	"	"	259	"	"	"
147	"	"	"	260	"	"	"
148	"	"	"	261	"	"	"
149	"	"	"	262	"	"	"
150	"	"	"	263	"	"	"
151	"	"	"	264	"	"	"
1							